

POZHET SURVEY RESULTS

Pozhet (Heterosexual HIV Service) is a NSW-wide service auspiced and located in Sydney Local Health District (SLHD). This survey was distributed in 2015 through four Local Health District Sexual Health Services to heterosexual people living with HIV and partners. It was also promoted through the Pozhet website and mailing list.

The aim of the survey was to provide an indication of the health and wellbeing of heterosexual people living with HIV in NSW.

Lack of convenience and lack of access to services remain important barriers to service usage for heterosexual identified people with HIV. The results showed that Pozhet as a service for heterosexual HIV individuals is a strong access point for information on HIV and HIV related services. However, Pozhet still faces a challenge accessing individuals in outer metro and regional areas.

DEMOGRAPHICS

Number of participants

93 

Gender

55% 
45% 

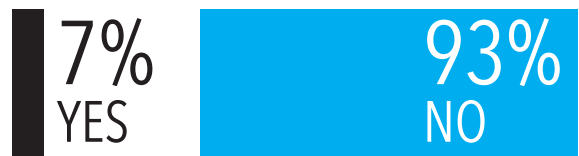
Sexual identity



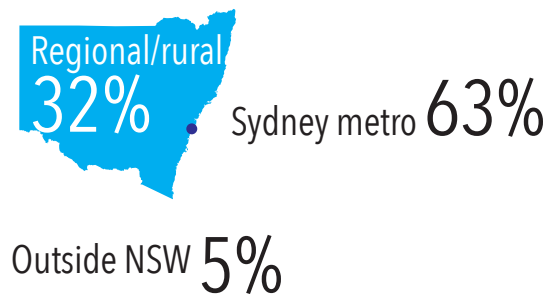
English spoken at home

YES **88%** NO **12%**

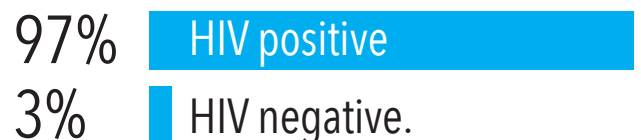
Aboriginal & Torres Strait Islander



Place of residence



HIV status

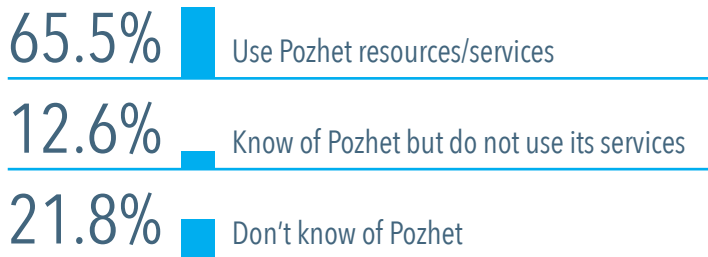


Treatment Status

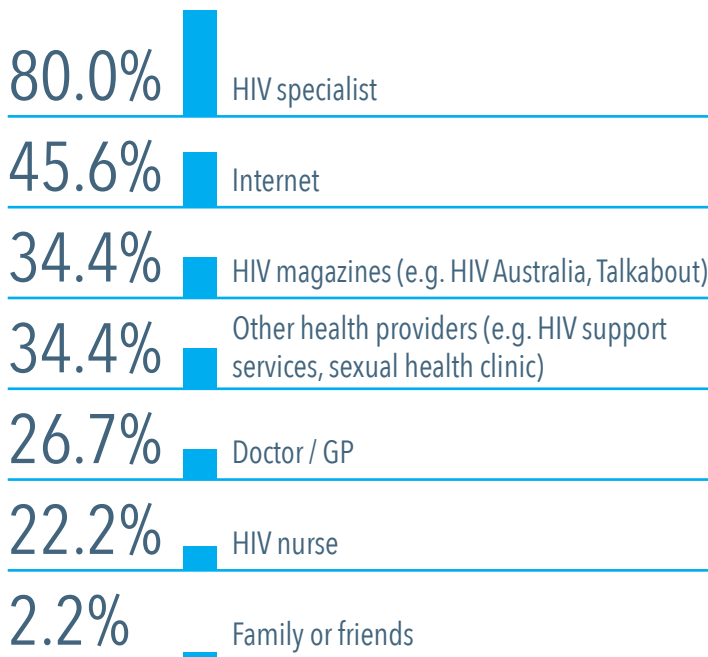
98% of the people living with HIV were on treatment

ABOUT POZHET

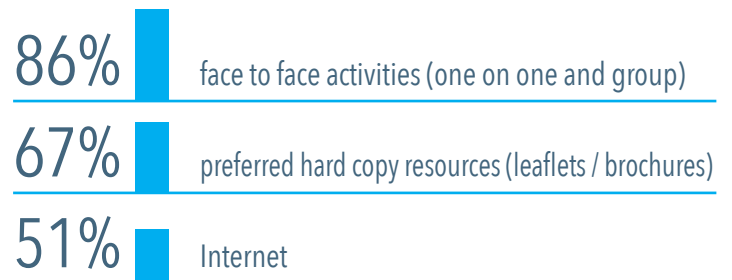
Knowledge of Pozhet



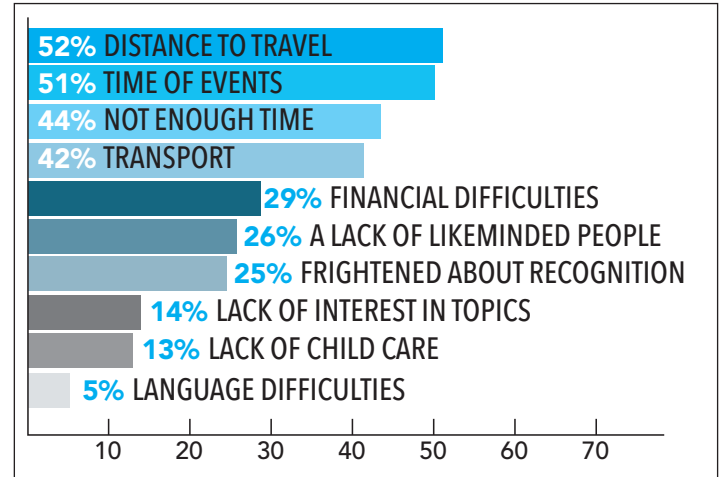
Preferred source of information



Preferred format for information



BARRIERS TO ENGAGING WITH POZHET PROGRAMS



Some comments about barriers to attending Pozhet events

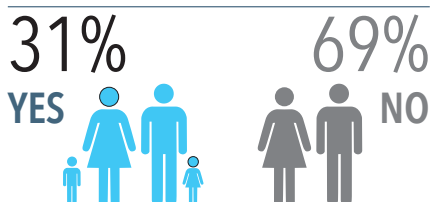
- [The events are] usually in [the] city
- Did not know events existed but will stay on the site [Pozhet website] for more information
- Anxiety around new people

WELLBEING AND SOCIAL CONNECTION

In a relationship



Children in their care



FINANCIAL AND SOCIAL DIFFICULTIES

